

Liquitex[®]
PROFESSIONAL

— **ACRYLIC** TM —
MEDIUMS



ACRYLIC MEDIUMS



Professional acrylic gessoes, mediums, additives and varnishes. For every stage, every technique, every surface.

Each medium is uniquely formulated and delivers a different result. From gloss gels to experimental texture effects and finishes, each will help you adjust your paint to suit your practice.

Compatible with all Liquitex colors and mediums	✓
Permanent	✓
Improves adhesion & durability	✓
Flexible and non-cracking	✓
Non-yellowing	✓

54 VARIANTS



As well as tailoring the working and optical properties of your acrylic paint film, you can choose specialized options to prep supports, protect your finished work, prepare screens for printing and keep your palette just as you like it.

Since our invention of artists' acrylics back in 1955, we've been making innovative art supplies of the highest quality. Our mediums contain the finest materials for stable, archival results and can be intermixed with any Liquitex paint for infinite effects.

ONE PAINT. MANY TECHNIQUES

Take one paint, a handful of mediums. And see what you can do.

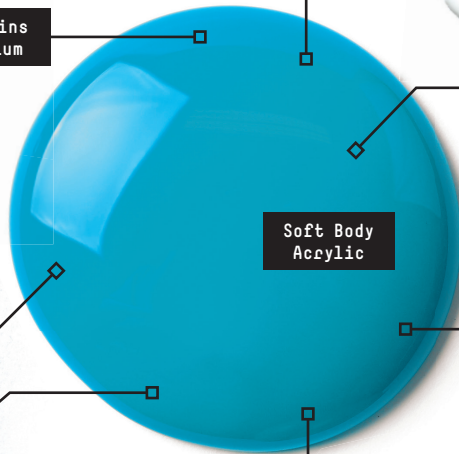


Make acrylic skins with Gloss Medium

Airbrush with Airbrush Medium

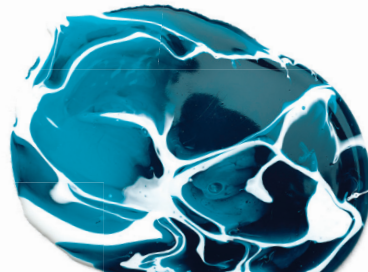
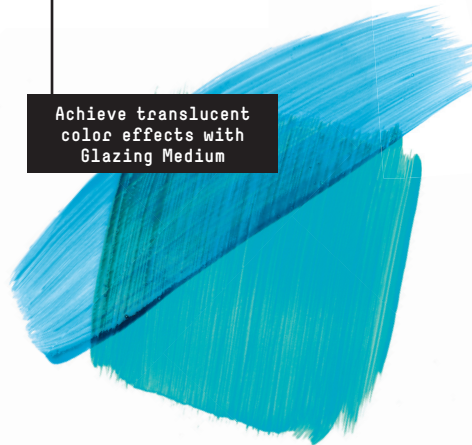


Create 3D effects with Gloss Super Heavy Gel

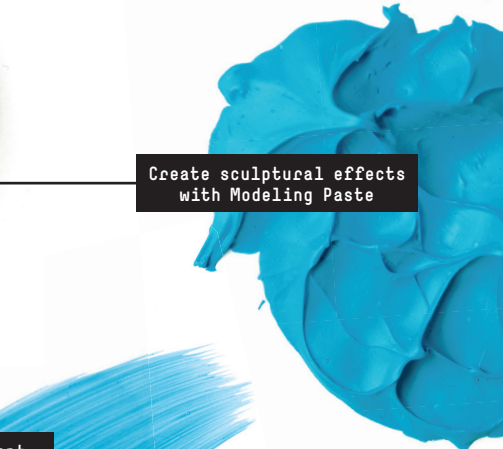


Soft Body Acrylic

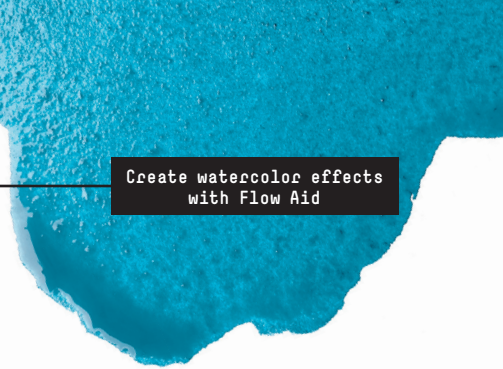
Achieve translucent color effects with Glazing Medium



Do flows & pours with Pouring Medium



Create sculptural effects with Modeling Paste



Create watercolor effects with Flow Aid

THE RANGE

Independently safety tested and archival.

As with all Liquitex materials, our mediums have been formulated to give you the highest level of archival permanence. Made with the best quality resins available, these professional formulas will resist cracking*, yellowing or peeling over time.

Gessos

Prime surfaces and add tooth.



GESSO

The classic titanium white acrylic ground.



CLEAR GESSO

A clear acrylic ground.



GRAY GESSO

A matte gray acrylic ground.



BLACK GESSO

A matte black acrylic ground.



SUPER HEAVY GESSO

A heavy structured white ground to build texture.

*Modeling pastes can crack if dried too rapidly.

Fluid Mediums

Lower viscosity and extend color without losing film strength.



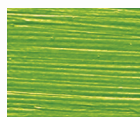
GLOSS MEDIUM

Increases gloss, transparency and adhesion.



SATIN MEDIUM

Lowers viscosity, extends color and provides a satin finish.



MATTE MEDIUM

Reduces gloss and increases transparency.



ULTRA MATTE MEDIUM

Dramatically reduces gloss and maintains opacity.



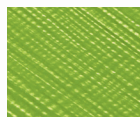
GLAZING MEDIUM

Increases transparency and enhances gloss so you can build translucent glazes.



SLOW-DRI® MEDIUM

Slows drying time by up to 40%, for blending and softer edges.



PALETTE WETTING SPRAY

Keeps your color open and workable for longer.



Gels & Pastes

Increase viscosity and extend color without losing film strength.



GLOSS GEL

Increases gloss and transparency and extends open rate.



GLOSS HEAVY GEL

Increases viscosity, gloss and transparency and extends open rate.



GLOSS SUPER HEAVY GEL

Dramatically increases viscosity, increases gloss and transparency, retains and extends open rate.



SATIN GEL

Increases viscosity and texture, extends color and provides a satin finish.



MATTE GEL

Reduces gloss, increases transparency and extends open rate.



MATTE SUPER HEAVY GEL

Dramatically increases viscosity, reduces gloss and increases transparency.



ULTRA MATTE GEL

Dramatically reduces gloss and maintains opacity.



SLOW-DRI® GEL

Slows drying time by up to 40% for excellent blending and softer edges.



SILKSCREEN MEDIUM

Improves flow and slows drying time to prevent paint from drying on the screen too quickly.



MODELING PASTE

Adds texture and sculptural form.



LIGHT MODELING PASTE

Lighter in weight, adds texture and sculptural form.



FLEXIBLE MODELING PASTE

Adds texture and sculptural form with increased flexibility.

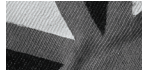
Effects

Add texture, alter the behavior and character of color without losing film strength.



MASKING FLUID

Removable unpigmented liquid mask for masking areas of work.



FABRIC MEDIUM

Increases adhesion and flexibility of color on fabric.



AIRBRUSH MEDIUM

Extends color to a stable, water-like consistency.



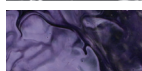
IRIDESCENT MEDIUM

Increases flow, reduces crazing and gives a flexible iridescent finish.



POURING MEDIUM

Increases flow, reduces crazing, gives a high gloss flexible finish.



MATTE POURING MEDIUM

Increases flow, reduces crazing and gives a flexible matte finish.



IRIDESCENT POURING MEDIUM

Increases flow, reduces crazing and gives a flexible iridescent finish.



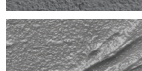
STRING GEL

Extends color to a glossy, string-like consistency.



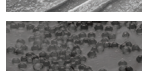
CERAMIC STUCCO

A gel filled with ceramic spheres, gives a fine, granular texture.



NATURAL SAND

A sand particle gel, gives a medium, granular texture.



GLASS BEADS

A glass microspheres gel, gives a reflective, undulating texture.



GOLD METALLIC MEDIUM

Gives paint a metallic gold effect and adds gold surface highlights.



SILVER METALLIC MEDIUM

Gives paint a metallic silver effect and adds silver surface highlights.



CRACKLE PASTE

Creates a structurally stable crackle effect on rigid surfaces.



GLASS MEDIUM

Creates a smooth, high gloss finish that adheres to slick non-porous surfaces like glass.

Additives

Binder-free formulas to adjust paint character.



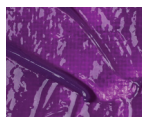
SLOW-DRI® FLUID ADDITIVE

Slows dry time by up to 40% without affecting transparency.



FLOW AID™ ADDITIVE

Enhances the flow of diluted color.



SLOW-DRI® GEL ADDITIVE

Slows dry time by up to 40% without affecting transparency.



LIQUITHICK™ ADDITIVE

Thickens and gives a flexible, matte spongy texture.



Varnishes

Seal and protect finished work from dirt, dust and UV damage.



HIGH GLOSS VARNISH

Non-removable, archival varnish with a high gloss finish.



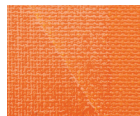
GLOSS VARNISH

(brush-on and spray) Non-removable, archival varnishes with a gloss finish.



SATIN VARNISH

(brush-on and spray) Non-removable, archival varnishes with a satin finish.



MATTE VARNISH

(brush-on and spray) Non-removable, archival varnish with a matte finish.



SOLUVAR® GLOSS VARNISH

(brush-on and spray). Removable, archival varnish with a gloss finish.



SOLUVAR® MATTE VARNISH

(brush-on and spray) Removable, archival varnish with a matte finish.



Artists' acrylics
since 1955.

Liquitex[®]
PROFESSIONAL



liquitex.com

7652455

